

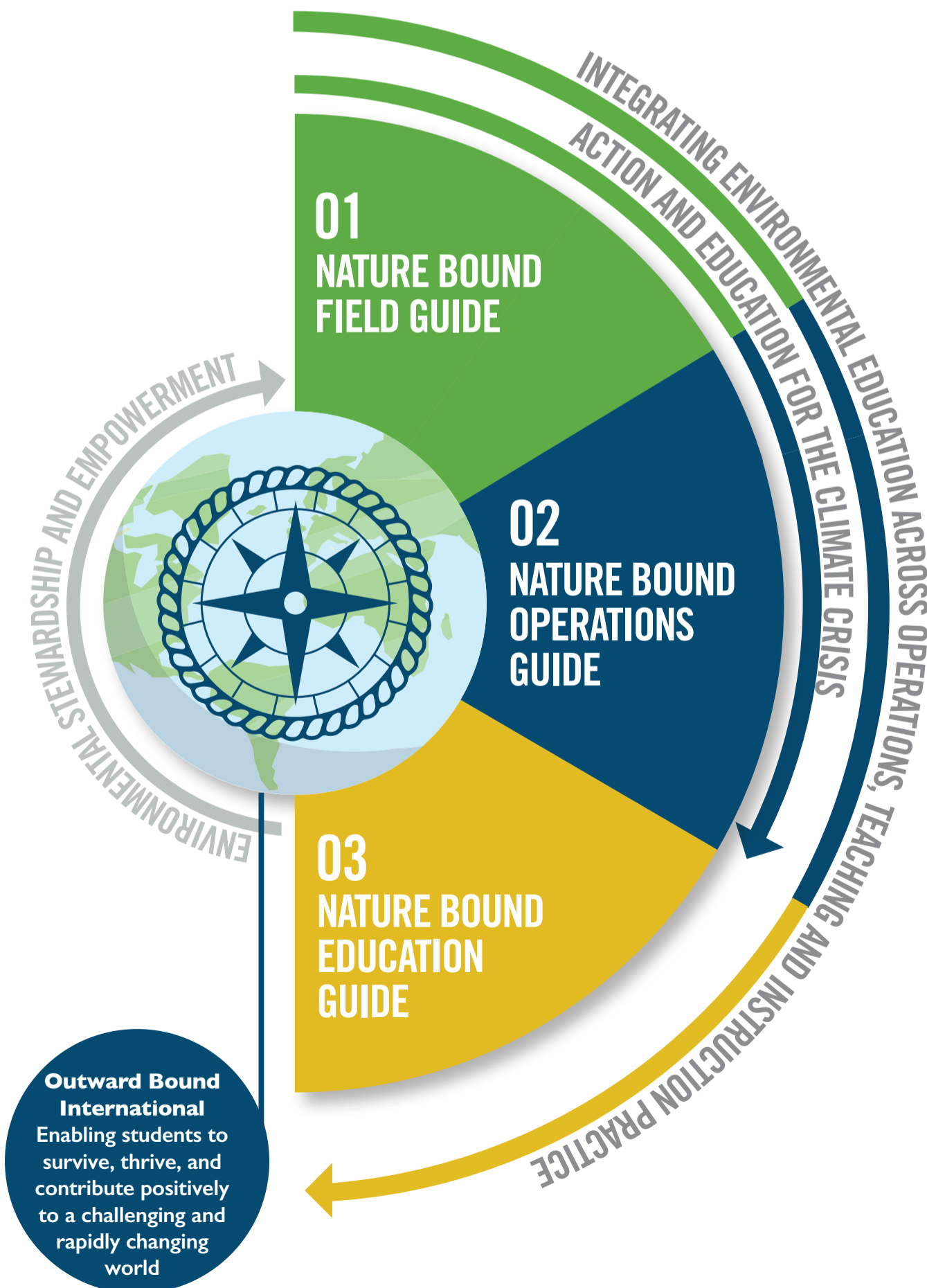


# OBI ENVIRONMENTAL CHARTER

## NATURE BOUND VISUAL OVERVIEW

Within the international network of Outward Bound Schools and the wider social, cultural and ecological communities in which they operate, we recognise the natural world and future generations as key stakeholders. As such we are committed to:

- Reconnecting students to nature, to themselves, to each other, and to places; developing ecological awareness and understanding; fostering environmental stewardship and empowerment
- Excellence in environmental performance across our operations
- Integrating environmental education across our operations, teaching and instructional practice
- Action and education for the climate crisis



**We will reduce our impact through careful measurement and analysis, behavioural change, and innovative practice in the following areas:**

**1. Education:** Strengthen participants' understanding of and connection to themselves, each other, the natural world, and places. Empower students towards positive behavioural change.

**2. Field operations:** Evolve our "nature bound" principles to ensure our field operations are environmentally and culturally sustainable

**3. Carbon:** Reduce and mitigate carbon emissions.

**4. Energy:** Explore opportunities for energy efficiency and reduce overall consumption across operations.

**5. Waste:** Reduce, re-use and re-cycle as much waste material as possible across our operations. Look to integrate circular economy principles where possible.

**6. Water:** Conserve water and adopt geographically-appropriate/responsible methods of waste water discharge.

**7. Supply chains:** Work with our partners and suppliers to help us achieve the above goals, and to promote sustainable practice in relation to their own operations.

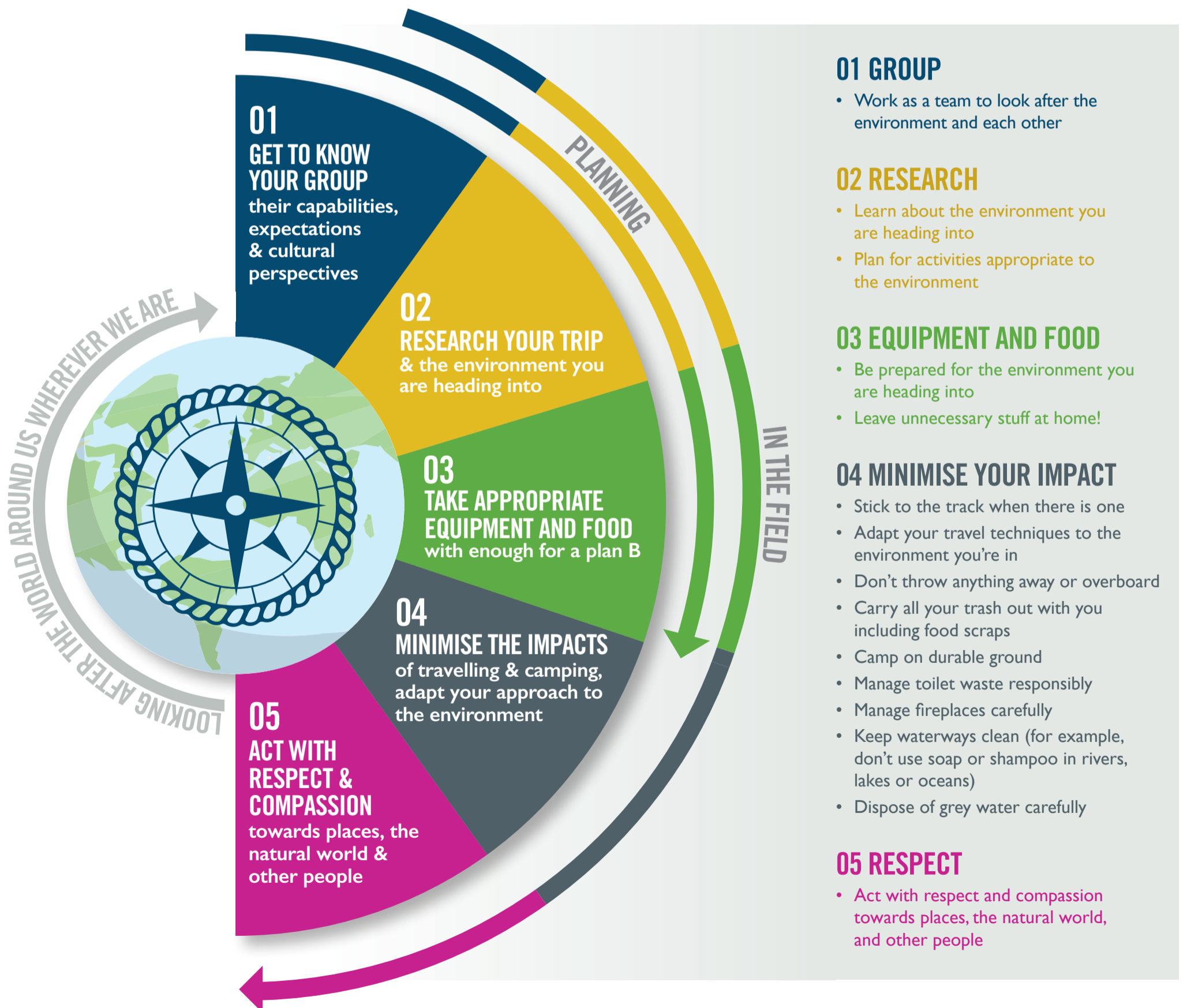


# NATURE BOUND FIELD GUIDE

## VISUAL OVERVIEW

### DEVELOPING ECOLOGICAL AWARENESS, FOSTERING ENVIRONMENTAL STEWARDSHIP AND EMPOWERMENT

Minimising our environmental impact and encouraging respect and compassion towards places, the natural world and other people.



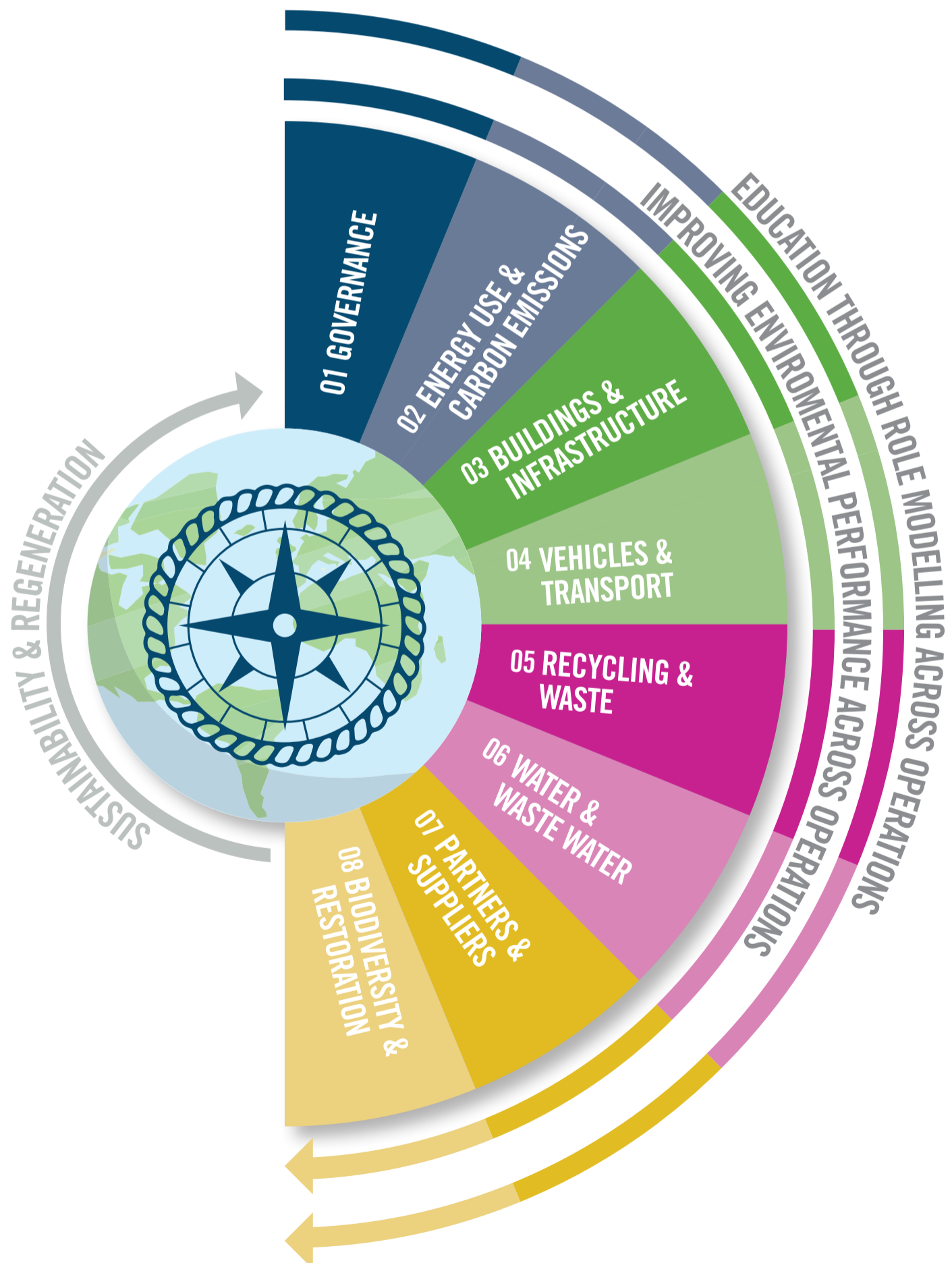


# NATURE BOUND OPERATIONS GUIDE

## VISUAL OVERVIEW

IMPROVING ENVIRONMENTAL PERFORMANCE ACROSS  
OUTWARD BOUND SCHOOL OPERATIONS.

Role modelling and inspiring students and stakeholders.  
Taking action for the climate crisis.





# NATURE BOUND EDUCATION GUIDE

## VISUAL OVERVIEW

**(RE) CONNECTING STUDENTS WITH THEMSELVES, WITH  
EACH OTHER, WITH NATURE AND PLACE**

Developing greater ecological awareness and understanding.  
Fostering a sense of environmental stewardships and empowerment.  
Education for the climate crisis.

